



CEDAR SECONDARY

School Description:

Cedar Community Secondary School (CCSS) is located in the beautiful town of Cedar, approximately eight kilometres southeast of Nanaimo. CCSS is located on the traditional and unceded territories of the Snuneymuxw First Nation people. Its feeder schools are Cedar, Cinnabar Valley and Qwam Qwum Stuwixwulh elementary schools.

CCSS was first opened in 1999 and was closed in 2014, when it was to be retrofitted as an elementary school site. The school reopened in 2016 as a secondary school and is working to rebuild and restore the sense of belonging and strong community feel the schools always had.

Cedar staff are dedicated to improving student learning and are part of a professional learning community that work in teams to collaborate on shared goals to ensure all students are learning at high levels.

Neighbourhood profile (Regional District of Nanaimo):

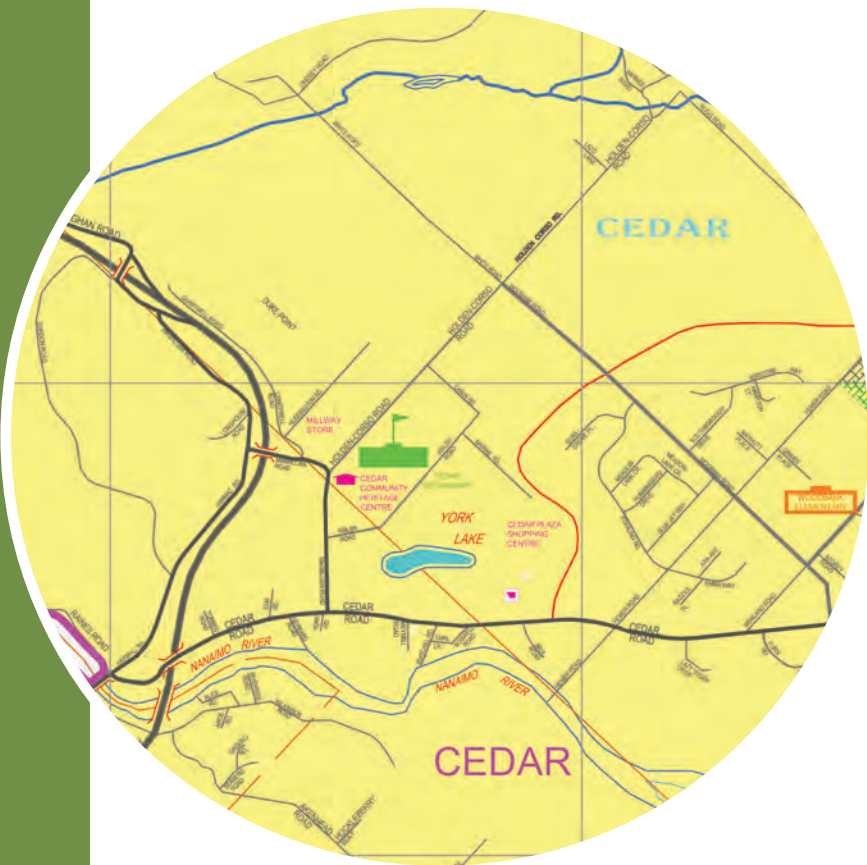
Cedar (Rural District of Nanaimo Electoral Area 'A') is bordered by the City of Nanaimo to the north, Electoral Area 'C' to the west, the Strait of Georgia to the east, and the Cowichan Valley Regional District to the south. The plan area is home to three Snuneymuxw First Nation reserves located near the mouth of the Nanaimo River. The plan area also includes the neighbourhoods of Boat Harbour, Cassidy, Cedar, Cedar-by-the Sea, South Wellington, and Yellow Point.



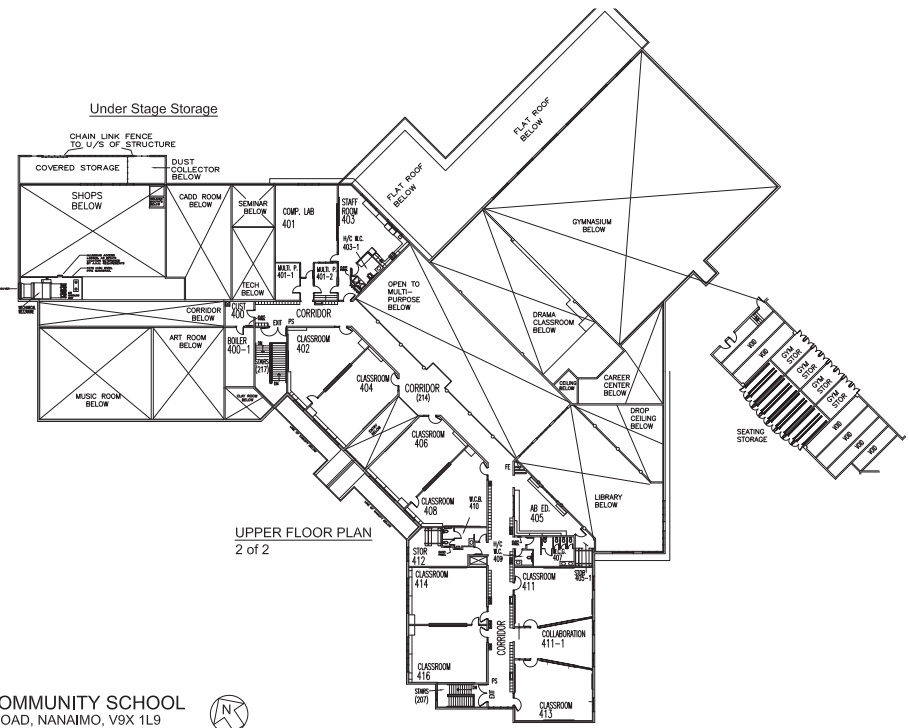
SCHOOL	OFFICIAL CAPACITY (NO PORTABLES)	# PORTABLES	CAPACITY (WITH PORTABLES)	2020-21 FINAL ENROLMENT	INTERNAL PROJECTIONS (2021-22)	INTERNAL PROJECTIONS (2022-23)	INTERNAL PROJECTIONS (2023-24)	CONSULTANT PROJECTION FOR (2030-31)	% CAPACITY (2020-21) ENROLMENT OVER OFFICIAL CAPACITY	% CAPACITY (2030-31) ENROLMENT OVER OFFICIAL CAPACITY
CEDAR SECONDARY	425	0	425	272	284	296	308	425	-36%	0%

Facility Condition Index:

0.44

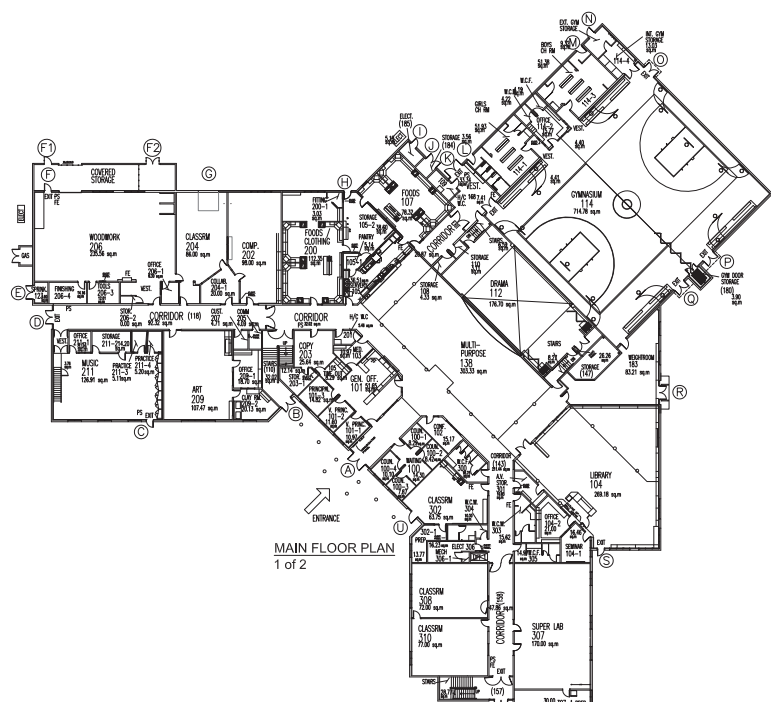


- ENCLOSED SPACES
- Door Access To Utilities
- 1 - Under Stage From Multi-Purpose Room (Turn On Ventilation System)
 - 3 - Under Stage From Gymnasium (Turn On Ventilation System)
- Ceiling Hatches
- 2 - Custodian Room #113
 - 4 - H/C W.C. Room #169
- Roof Access
- Exterior Storage Room #184 (Ladder To Gym Roof)
 - Hatch To Gym Door Access
 - AHU Above Room #201



209-CEDAR COMMUNITY SCHOOL
1640 MACMILLAN ROAD, NANAIMO, V9X 1L9
Update: 05-25-2020 O.J

- ENCLOSED SPACES
- Door Access To Utilities
- 1 - Under Stage From Multi-Purpose Room (Turn On Ventilation System)
 - 3 - Under Stage From Gymnasium (Turn On Ventilation System)
- Ceiling Hatches
- 2 - Custodian Room #113
 - 4 - H/C W.C. Room #169
- Roof Access
- Exterior Storage Room #184 (Ladder To Gym Roof)
 - Hatch To Gym Door Access
 - AHU Above Room #201





CEDAR ELEMENTARY

School Description:

Cedar Elementary is a Kindergarten to Grade 7 school located in the heart of the Cedar community of Nanaimo. Its current school population is 317 students.

It is one of many Strong Start schools for parents and children ages birth to 5.

It works in conjunction with the group of Cedar Schools to provide activities and services that support students and community.

Neighbourhood profile (Regional District of Nanaimo):

Cedar (Rural District of Nanaimo Electoral Area 'A') is bordered by the City of Nanaimo to the north, Electoral Area 'C' to the west, the Strait of Georgia to the east, and the Cowichan Valley Regional District to the south. The plan area is home to three Snuneymuxw First Nation reserves located near the mouth of the Nanaimo River. The plan area also includes the neighbourhoods of Boat Harbour, Cassidy, Cedar, Cedar-by-the Sea, South Wellington, and Yellow Point.



SCHOOL	OFFICIAL CAPACITY (NO PORTABLES)	# PORTABLES	CAPACITY (WITH PORTABLES)	2020-21 FINAL ENROLMENT	INTERNAL PROJECTIONS (2021-22)	INTERNAL PROJECTIONS (2022-23)	INTERNAL PROJECTIONS (2023-24)	CONSULTANT PROJECTION FOR (2030-31)	% CAPACITY (2020-21) ENROLMENT OVER OFFICIAL CAPACITY	% CAPACITY (2030-31) ENROLMENT OVER OFFICIAL CAPACITY
CEDAR ELEMENTARY	290	3	362	313	309	319	306	435	8%	50%



CINNABAR VALLEY ELEMENTARY

School Description:

The school opened its doors to students in 2001. Nestled in the heart of Cinnabar Valley, the school currently serves 299 students, with the expectation of continued growth in the coming years. Known as the “Valley Vipers”, the school has a rich history of strong academic, athletic, and artistic achievement for students.

Cinnabar Valley is a [PBIS](#) school, meaning that it is actively teaching Positive Behaviour to students, working on a system of intervention and supports. Part of the system includes recognizing students with Valley Viper Tickets when they demonstrate positive behaviours. These tickets become part weekly and monthly draws, allowing for further recognition through school announcements and monthly assemblies. The school matrix for positive behaviour expectation is included on the website.



SCHOOL	OFFICIAL CAPACITY (NO PORTABLES)	# PORTABLES	CAPACITY (WITH PORTABLES)	2020-21 FINAL ENROLMENT	INTERNAL PROJECTIONS (2021-22)	INTERNAL PROJECTIONS (2022-23)	INTERNAL PROJECTIONS (2023-24)	CONSULTANT PROJECTION FOR (2030-31)	% CAPACITY (2020-21) ENROLMENT OVER OFFICIAL CAPACITY	% CAPACITY (2030-31) ENROLMENT OVER OFFICIAL CAPACITY
CINNABAR VALLEY ELEMENTARY	245	4	341	281	291	287	285	281	15%	15%



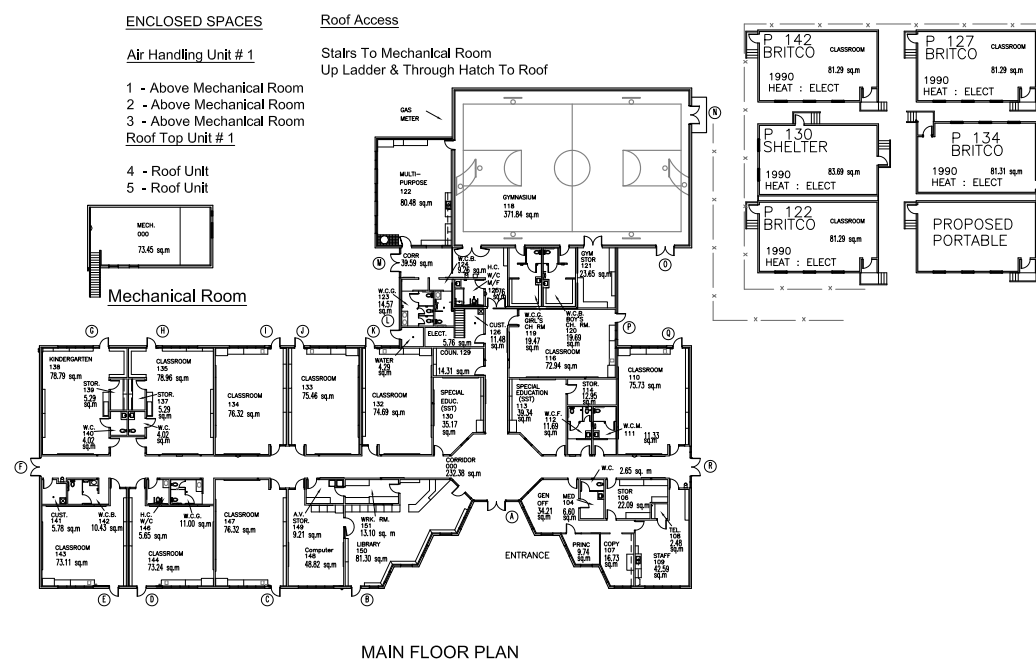
Neighbourhood profile (City of Nanaimo):

Residential development in this combined area is located in the South End/Chase River Planning Area and includes easily the most vacant and developable residential land of all Planning Areas. The 57 available hectares at the South Nanaimo Urban Node is about 80% of all available Urban Node land in the city.

Both the Oceanview and Sandstone development projects are in this area, although Sandstone land is not included in the available land data provided by Colliers. This Planning Area is expected to receive a significant portion of future development, some of which may occur at Oceanview or Sandstone (there is no distinction between the different development projects within the Planning Area in this analysis).

Facility Condition Index:

0.38



390-CINNABAR ELEMENTARY SCHOOL
100 OHIO WAY, NANAIMO, V9X 1C8
Update:05-07-2020 O.J





QWAM QWUM STUWIXWULH SCHOOL

School Description:

Snuneymuxw First Nation and Nanaimo Ladysmith Public Schools are committed to co-govern and operate the new Qwam Qwum Stuwixwulh School. This is part of an ongoing journey to restore a sense of place and to connect students to the knowledge and language that is rooted in these sacred lands.

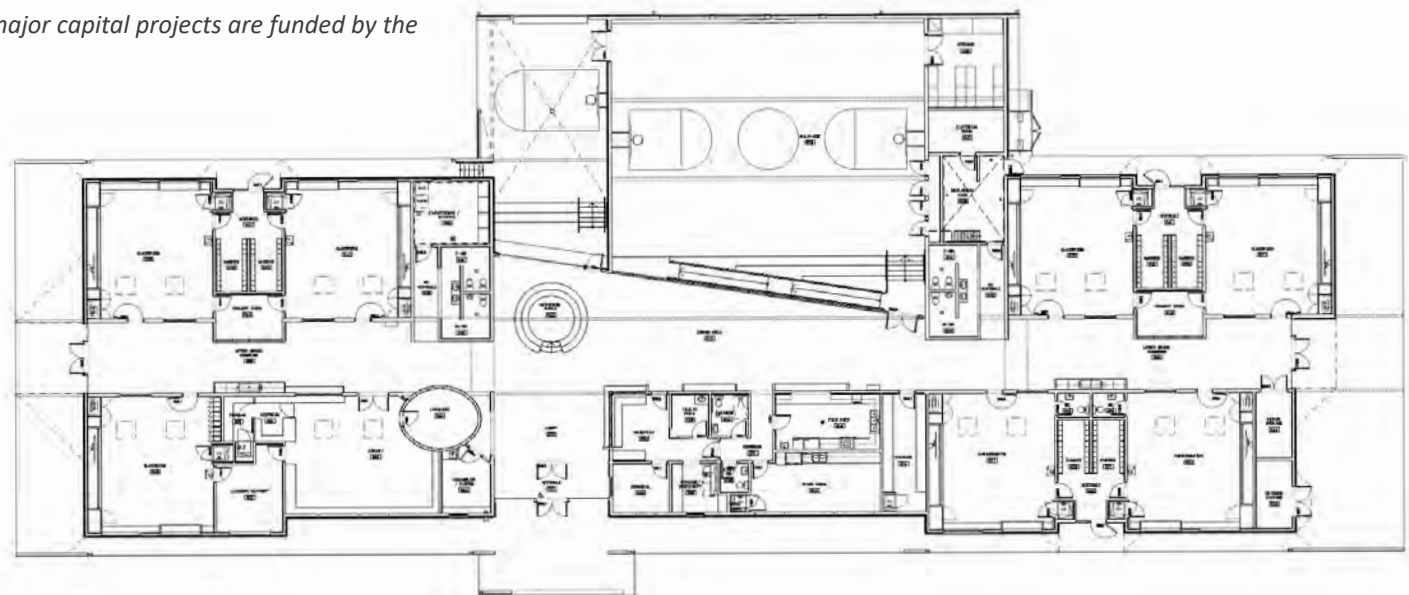


SCHOOL	OFFICIAL CAPACITY (NO PORTABLES)	# PORTABLES	CAPACITY (WITH PORTABLES)	2020-21 FINAL ENROLMENT	INTERNAL PROJECTIONS (2021-22)	INTERNAL PROJECTIONS (2022-23)	INTERNAL PROJECTIONS (2023-24)	CONSULTANT PROJECTION FOR (2030-31)	% CAPACITY (2020-21) ENROLMENT OVER OFFICIAL CAPACITY	% CAPACITY (2030-31) ENROLMENT OVER OFFICIAL CAPACITY
QQS	150	0	150	97	89	86	84	97	-35%	-35%

Facility Condition Index:

0.00

Please note that QQS is solely owned by Snuneymuxw First Nation and therefore all major capital projects are funded by the First Nation.



Qwam Qwum Stumixwulh School
1390 Stuywut Street, Nanaimo, V9X 1M4

