



JOHN BARSBY SECONDARY

School Description:

John Barsby Secondary is a community school which is situated in a neighborhood with long-time residents. It is a very multicultural school with a focus on providing student supports in the most inclusive manner possible. It is in its first year of implementing both a linear grade 8 model and a highly revamped Inclusion support model. There is good commitment from community partners to support its students, and they are working on building more of these partnerships. Within the school, they are starting to explore options for multi-disciplinary course offerings and land-based electives.

The school is situated centrally in the Harewood community and is in close proximity to the Chase River, Colliery Dam, Vancouver Island University and a growing number of retailers. There is a large amount of pride in its students; especially with regard to the success of our athletic teams, and they are working on shifting this into other areas (such as fine arts and academics) as well. The staff who choose to stay at Barsby do so because they are committed to their students and understand some of the experiences they walk in the door with.



SCHOOL	OFFICIAL CAPACITY (NO PORTABLES)	# PORTABLES	CAPACITY (WITH PORTABLES)	2020-21 FINAL ENROLMENT	INTERNAL PROJECTIONS (2021-22)	INTERNAL PROJECTIONS (2022-23)	INTERNAL PROJECTIONS (2023-24)	CONSULTANT PROJECTION FOR (2030-31)	% CAPACITY (2020-21) ENROLMENT OVER OFFICIAL CAPACITY	% CAPACITY (2030-31) ENROLMENT OVER OFFICIAL CAPACITY
JOHN BARSBY SECONDARY	1000	0	1000	624	673	734	746	925	-38%	-8%

Neighbourhood profile (City of Nanaimo):

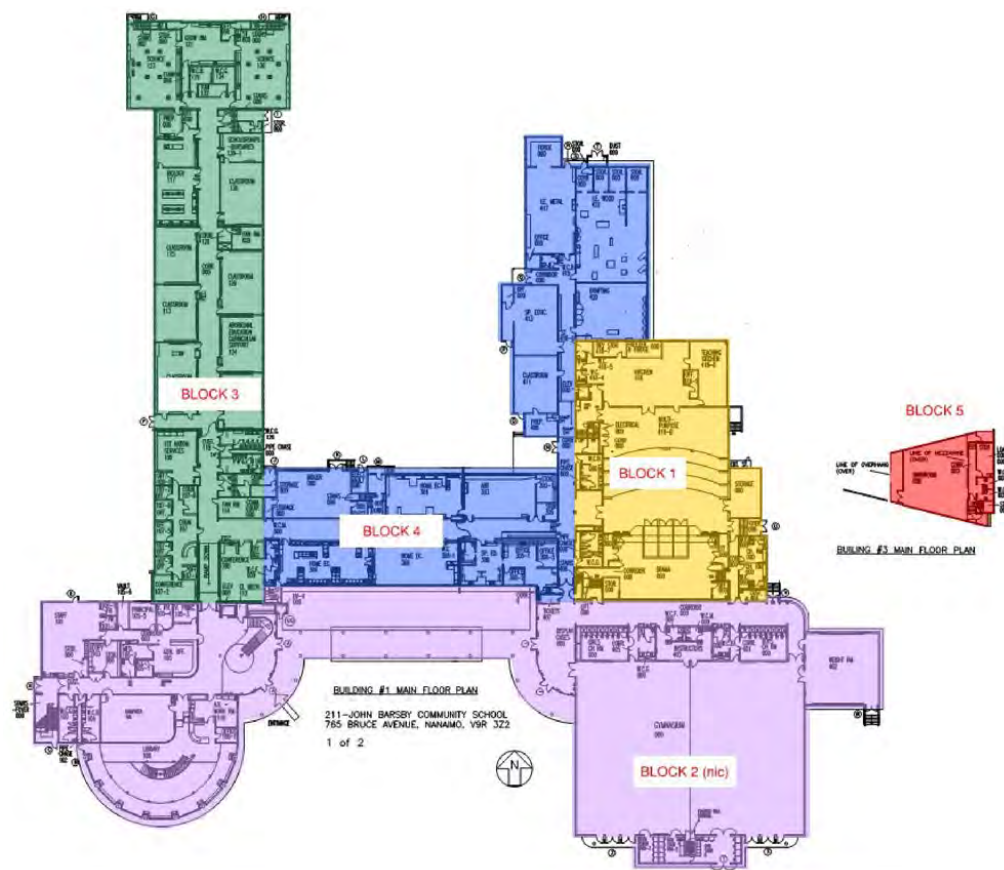
The Harewood Planning Area is very large and primarily designated for Neighbourhood development, but it also includes Corridor-designated lands surrounding the South Harewood and Southgate commercial centres. This area can accommodate significant single-family development, but is also expected to continue evolving toward higher-density housing forms along with prevailing trends elsewhere.

Facility Condition Index:

0.80

Seismic Priority:

- H1 Auditorium/Kitchen/MPR
- H1 NIC
- H1 Classrooms
- H3 Music Room



Seismic Block Plan

Block 1 - Auditorium/Kitchen/MPR - SRA= H1

Block 2 - nic

Block 3 - Classrooms - SRA H1

Block 4 - Classrooms - SRA H1

Block 5 - Music Room - SRA H3



BAYVIEW ELEMENTARY

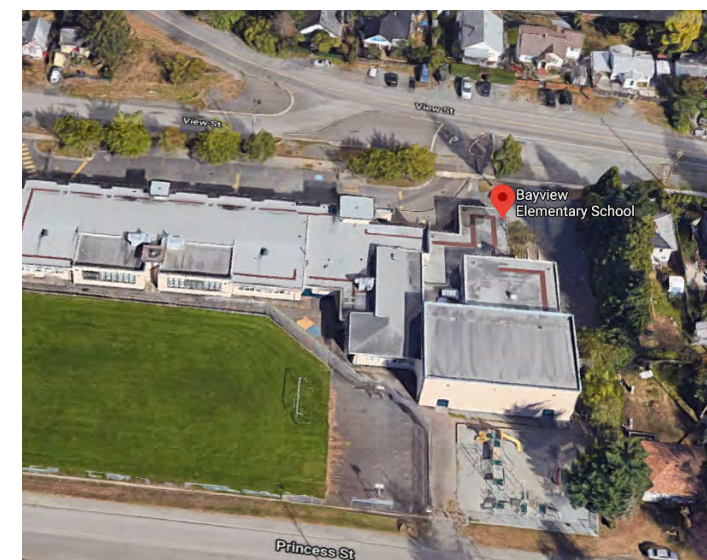
School Description:

Bayview – home of the ‘Boxers’ – is a ‘family friendly’ learning place located in the south end of Nanaimo. It is a Kindergarten to Grade 7 school and currently has 175 students split into 10 divisions.

The staff at Bayview strives to create an educational climate that encourages each child to grow academically, physically and socially to the best of his/her ability. Classes and programs are organized to provide each child with successful experiences, appropriate challenges and a sense of achievement. It is committed to creating a safe, warm and nurturing environment for each student.

Bayview Elementary School is a place where staff, students, families and community members work together to learn from each other what it means to be safe, caring and responsible citizens. It is grateful for the outstanding community support that has helped us to improve technology, coach sports leagues, fund-raise to improve our playground, enjoy a community garden, enjoy learning opportunities beyond our school, and so much more.

It offers a breakfast, snack and lunch program thanks to Breakfast Clubs of Canada, the BC School Fruit and Vegetable program, community donations, and Community LINK funding.



SCHOOL	OFFICIAL CAPACITY (NO PORTABLES)	# PORTABLES	CAPACITY (WITH PORTABLES)	2020-21 FINAL ENROLMENT	INTERNAL PROJECTIONS (2021-22)	INTERNAL PROJECTIONS (2022-23)	INTERNAL PROJECTIONS (2023-24)	CONSULTANT PROJECTION FOR (2030-31)	% CAPACITY (2020-21) ENROLMENT OVER OFFICIAL CAPACITY	% CAPACITY (2030-31) ENROLMENT OVER OFFICIAL CAPACITY
BAYVIEW ELEMENTARY	220	1	244	177	172	170	180	342	-20%	55%



Neighbourhood profile (City of Nanaimo):

The combined City Centre/Protection Island Planning Area includes part of the Downtown Urban Node as well as Neighbourhood lands and a small amount of Corridor land on Third Street. The longer-term outlook for residential development in this area will be primarily apartment-oriented, but the ultimate volume of downtown residential tower development will depend on market interest.

Facility Condition Index:

0.63

Seismic Priority

H1 Classrooms

H1 MPR

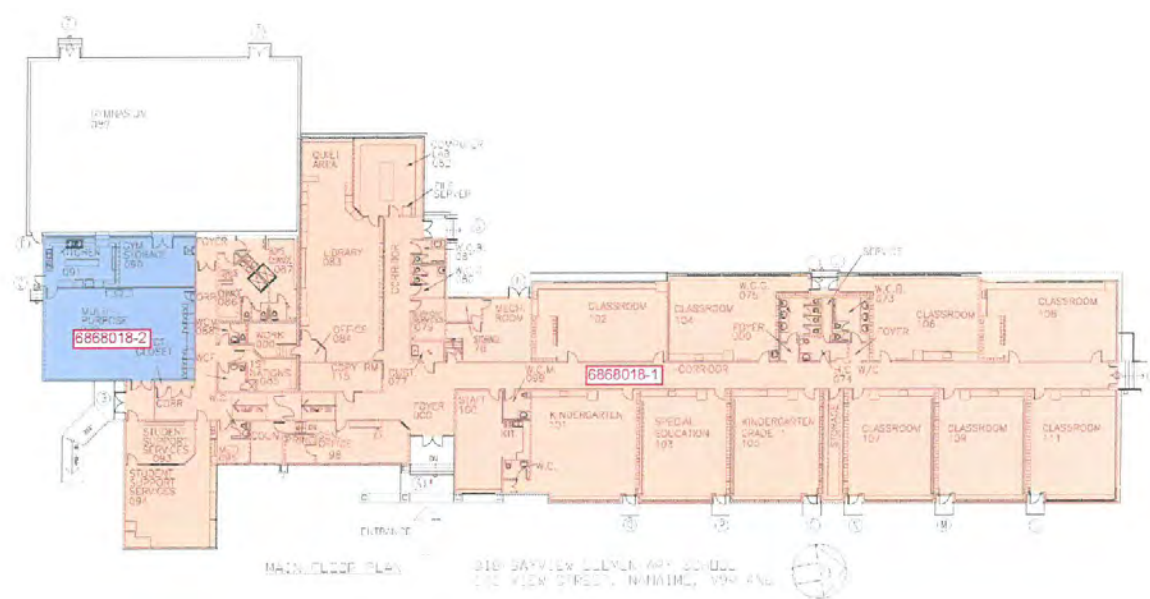


Figure 3.1 : Key Plan
Block #6868018-1
Classroom
Bayview Elementary



CHASE RIVER ELEMENTARY

School Description:

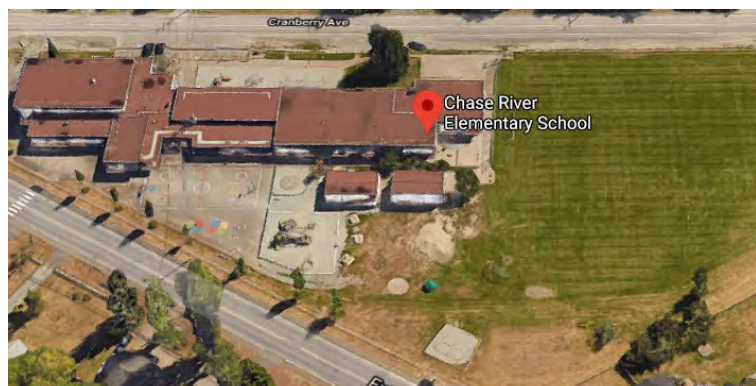
Chase River Elementary School is a friendly, warm, learning place located in the south end of Nanaimo. It is a K-7 school currently with 11 divisions enrolling 220 children. Its catchment areas include Extension and Chase River communities.

The highly experienced staff of Chase River Elementary strives to create an educational climate that focuses on success for all learners, encouraging each child to achieve academically, physically and socially to the best of his/her ability. School programs and practices are based on current educational research aimed at preparing children to be independent, lifelong learners ready to take on the challenges of the twenty-first century. The staff are committed to creating a safe, engaging learning environment.

Neighbourhood profile (City of Nanaimo):

Residential development in this combined area is located in the South End/Chase River Planning Area and includes easily the most vacant and developable residential land of all Planning Areas. The 57 available hectares at the South Nanaimo Urban Node is about 80% of all available Urban Node land in the city.

Both the Oceanview and Sandstone development projects are in this area, although Sandstone land is not included in the available land data provided by Colliers. This Planning Area is expected to receive a significant portion of future development, some of which may occur at Oceanview or Sandstone (there is no distinction between the different development projects within the Planning Area in this analysis).



SCHOOL	OFFICIAL CAPACITY (NO PORTABLES)	# PORTABLES	CAPACITY (WITH PORTABLES)	2020-21 FINAL ENROLMENT	INTERNAL PROJECTIONS (2021-22)	INTERNAL PROJECTIONS (2022-23)	INTERNAL PROJECTIONS (2023-24)	CONSULTANT PROJECTION FOR (2030-31)	% CAPACITY (2020-21) ENROLMENT OVER OFFICIAL CAPACITY	% CAPACITY (2030-31) ENROLMENT OVER OFFICIAL CAPACITY
CHASE RIVER ELEMENTARY	195	4	291	218	236	237	233	387	12%	98%



Facility Condition Index:

0.64

Seismic Priority:

H1 Gymnasium

H1 Classrooms

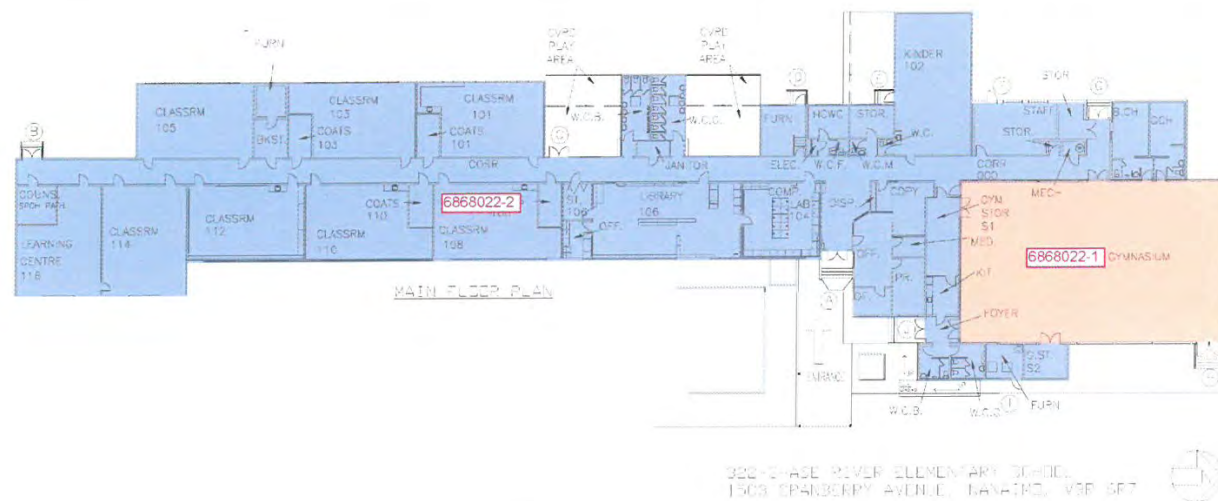


Figure 3.1 : Key Plan
Block #6868022-1
Gymnasium
Chase River Elementary





GEORGIA AVENUE COMMUNITY ELEMENTARY

School Description:

Georgia Avenue Community School is a “family friendly” learning place that is located in South Nanaimo.

They are a proud and exciting Strong Start to grade 7 school that also houses the District Life Skills program.

The staff at Georgia Avenue strives to create an educational climate that encourages each child to grow academically, physically and socially to the best of his/her ability. Classes and programs are organized to provide each child with successful experiences, appropriate challenges and a sense of achievement. It is committed to creating a safe, warm and nurturing environment for each student.

Neighbourhood profile (City of Nanaimo)

The Harewood Planning Area is very large and primarily designated for Neighbourhood development, but it also includes Corridor-designated lands surrounding the South Harewood and Southgate commercial centres. This area can accommodate significant single-family development, but is also expected to continue evolving toward higher-density housing forms along with prevailing trends elsewhere.



SCHOOL	OFFICIAL CAPACITY (NO PORTABLES)	# PORTABLES	CAPACITY (WITH PORTABLES)	2020-21 FINAL ENROLMENT	INTERNAL PROJECTIONS (2021-22)	INTERNAL PROJECTIONS (2022-23)	INTERNAL PROJECTIONS (2023-24)	CONSULTANT PROJECTION FOR (2030-31)	% CAPACITY (2020-21) ENROLMENT OVER OFFICIAL CAPACITY	% CAPACITY (2030-31) ENROLMENT OVER OFFICIAL CAPACITY
GEORGIA AVE ELEMENTARY	465	1	489	338	410	431	441	581	-27%	25%

**Facility Condition Index:**

0.56

Seismic Priority:

H2 Gymnasium
H1 Classrooms & Admin



Figure 3.1 : Key Plan
Block #6868041-2
Gymnasium
Georgia Avenue Elementary

Block 2 - Gymnasium - SRA H2
Block 3 - Classrooms + Admin. - SRA H1



PARK AVENUE ELEMENTARY

School Description:

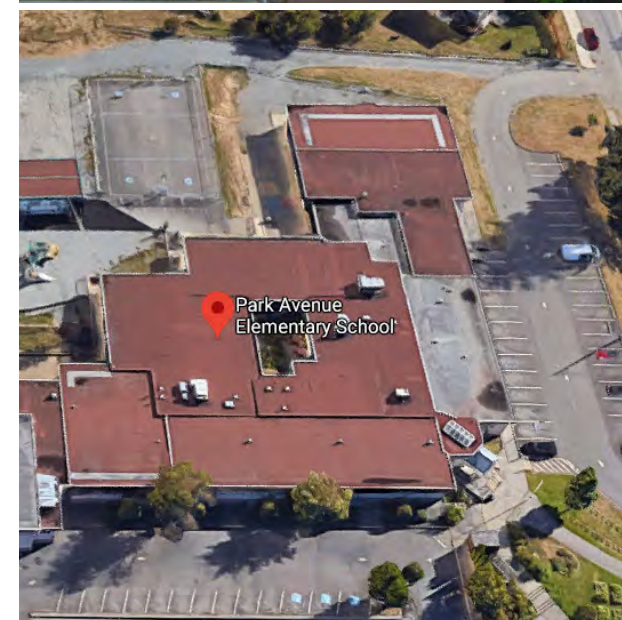
Park Avenue Community Elementary School is a great place to learn and work! It has a fabulous community support from families, service clubs, neighbours and staff. They work together to help their students become safe, caring and responsible citizens.

It has approximately 340 students from kindergarten through grade seven. The staff create an educational climate that encourages each child to grow academically, physically and socially to the best of their ability.

There is a private day care that rents space in the school that offers a before and after daycare service for families with students at the school.

Neighbourhood profile (City of Nanaimo)

The Harewood Planning Area is very large and primarily designated for Neighbourhood development, but it also includes Corridor-designated lands surrounding the South Harewood and Southgate commercial centres. This area can accommodate significant single-family development, but is also expected to continue evolving toward higher-density housing forms along with prevailing trends elsewhere.



SCHOOL	OFFICIAL CAPACITY (NO PORTABLES)	# PORTABLES	CAPACITY (WITH PORTABLES)	2020-21 FINAL ENROLMENT	INTERNAL PROJECTIONS (2021-22)	INTERNAL PROJECTIONS (2022-23)	INTERNAL PROJECTIONS (2023-24)	CONSULTANT PROJECTION FOR (2030-31)	% CAPACITY (2020-21) ENROLMENT OVER OFFICIAL CAPACITY	% CAPACITY (2030-31) ENROLMENT OVER OFFICIAL CAPACITY
PARK AVE ELEMENTARY	320	2	368	301	299	302	302	360	-6%	13%



Facility Condition Index:

0.48

Seismic Priority:

H1 Gymnasium/Change Rooms

H1 Classrooms

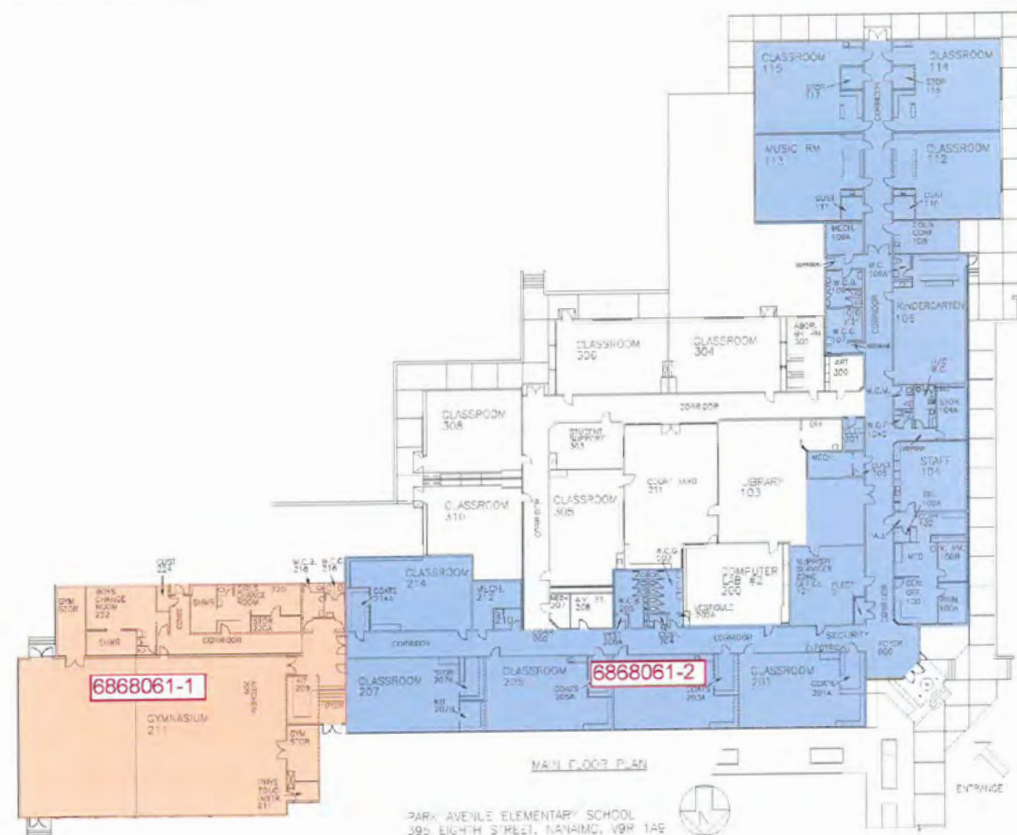


Figure 3.1 : Key Plan
Block #6868061-1
Gymnasium Change Rooms
Park Avenue Elementary

Block 1 - Gymnasium + Chng Rm - SRA H1

Block 2 - Classrooms - SRA H1