



**NANAIMO LADYSMITH**  
PUBLIC SCHOOLS

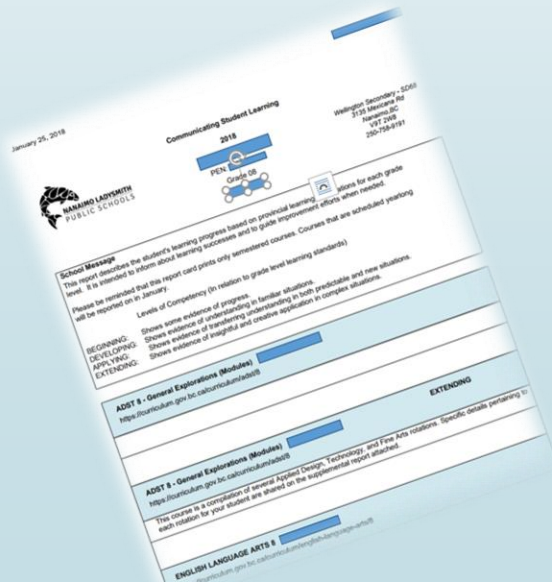
# MyEducation BC



Grade 8-12  
Family and Student Portals

# In the Family Portal, parents/guardians with an account can:

- ▶ Check attendance
- ▶ See if your contact information is up to date
- ▶ See some assessment/grade information
- ▶ View report cards



**NANAIMO LADYSMITH**  
PUBLIC SCHOOLS

# In the Family Portal, students with an account can:

- View attendance records
- See provincial assessment/grade information
- View report cards
- Complete online course selection
- See class assessment information
- View calendar



**NANAIMO LADYSMITH**  
PUBLIC SCHOOLS

## Why MyEdBC?

- Secure portal used in most school districts in BC
- Security is guided by BC's School Act and FIPPA
- Each parent and student will have their own account with secure access
- Storage of historical data, demographics, Attendance, transcripts of grades, and Graduation credits



# Who has access to the Portal?



## Teachers and other school staff

- Classroom teachers
- Principal/Vice-Principal

## Parents and Caregivers

- Primary parent invite
- Parents can add others (ie. extended family, second parent, etc.)

## Students

- Each student has unique log in



# How will this work for me?

1. Your child's school will send you an email to the email address you provided on the Student Information Form in September.

Welcome to the Nanaimo-Ladysmith MyEducation BC PARENT PORTAL which will allow access to see grades, attendance and other information on our child(ren). Each parent or guardian will have their own separate account.

To access the MyEducation BC System

1. Visit [www.myeducation.gov.bc.ca/aspen](http://www.myeducation.gov.bc.ca/aspen)
2. Make sure popups are enabled for your browser
3. Your user name will be: p68.first.lastname
4. Your temporary password will be: 123456

NOTE: both user name and password are case sensitive

5. Enter your user name and password then click Log On to access the system. You will be prompted to change your password and fill out some information so that in the future you can click "I forgot my password" to receive a new password.

Once inside the MyEducation BC system you can navigate around to view information for your student(s)

\*\*\* Please do not reply to this generated email.





## 2.Login to MyEd BC

The screenshot shows the login interface for "MyEducation BC Prod 3". It features two input fields: "Login ID" and "Password". A red arrow points from a callout box to the "Login ID" field, and another red arrow points from a second callout box to the "Password" field. Below the password field is a link that says "I forgot my password". At the bottom left of the form is a "Log On" button with a right-pointing arrow.

**MyEducation BC Prod 3**

Login ID

Password

[I forgot my password](#)

Log On

Type in user name provided from your Welcome Email (IE: p68.joe.smith)

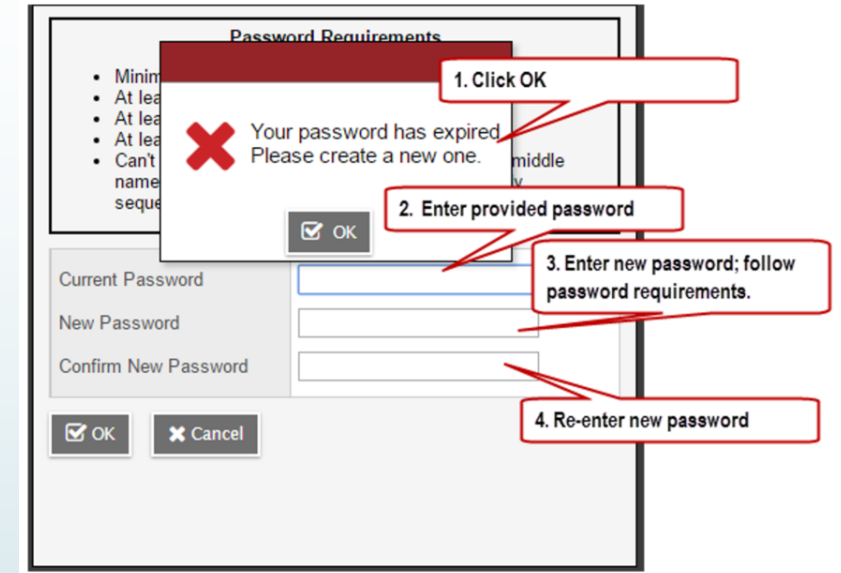
Type in password provided from your Welcome Email



### 3. Change your password and answer security questions:

When choosing a new password, please refer to the following guidelines:

- Password must be a minimum of eight characters
- At least one number
- At least one capital and lowercase letter
- At least one symbol that isn't a letter or a number
- Cannot contain 'password', login name, first name, middle name, last name, date of birth, personal id, or only sequential letters or numbers





# Now you are in MyEdBC!

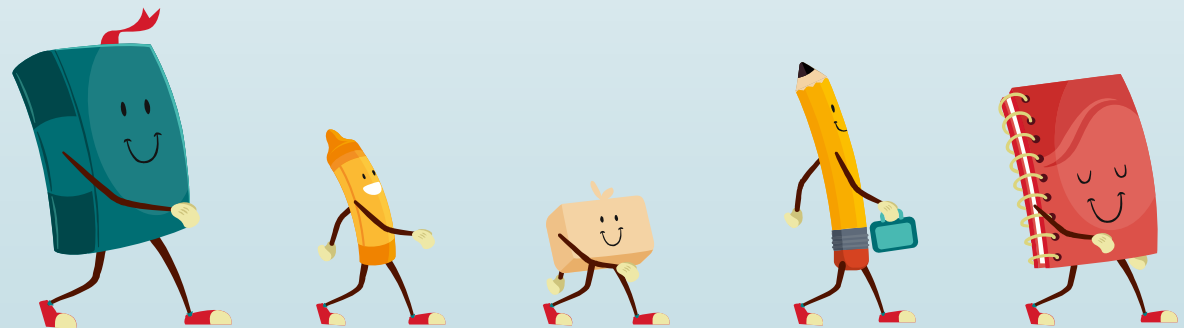
- MyEd BC is a friendly and safe program to navigate.
- Everything you see is “view only”, so you can’t change anything! Feel free to click around and explore.
- Please note that there are many default settings that may not apply to your child’s school. You may find that many tabs are unused.

Date	Code	Reason
07/03/2017	L	
01/03/2017	A	
22/02/2017	A-E	Illness
17/02/2017	A	
16/02/2017	A	
15/02/2017	A	
10/02/2017	L	
02/02/2017	L	
01/02/2017	A	



# Is MyEd BC safe?

- MyEdBC is currently being used by ALL districts in the province, to varying degrees.
- Security is guided by the rules and regulations of the School Act and Freedom of Information and Protection of Privacy Act (FIPPA).





# Can I see information for all my children?

- At this time, only secondary schools are opening parent accounts in MyEd.
- If you have children in both secondary and elementary schools, you will only have access to your secondary student's information in MyEd.
- If you have children in different secondary schools, you will be able to see all their information linked in your account.



# When will I get the email?

- You will receive an email on or around October 4, 2018.
- Your school will host information sessions that will provide login in support sessions for parents.
- Once student accounts are open, students can provide support at home!



## What if I never log in?

- You are not required to use your account in MyEd BC.
- However, NLPS will begin to electronically publish report cards in your child's account, and students will do online course selection this spring.
- If you choose not to use the portal, make sure to let your school know that you will need paper documents.

# What if I am having trouble logging in or navigating once I am logged in?

- Your school will have a designated MyEdBC support person.
- Consult the help menu in MyEd
- More detailed documents are posted on the school website



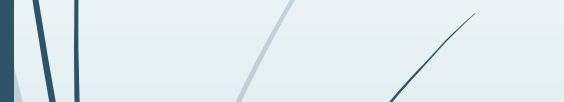


## Tour of MyEd BC:



Family Tab

Attendance  
Schedule  
Notifications



Academics Tab

Options  
send email  
Assignments  
Attendance



Calendar

# MyED BC "Express"

Aspen  
https://www.myeducation.gov.bc.ca

BRITISH COLUMBIA MyEducationBC

## Welcome to MyEducation BC!

You are not logged on or your session has expired.

Login ID  
p68 [redacted]

Password  
.....

[I forgot my password](#)

**LOG ON**

Aspen  
https://www.myeducation.gov.bc.ca

Welcome, [redacted]

**A+ ACADEMICS**

**TO DO**

**CALENDAR**

### Announcements

No announcements

### Overdue Assignments

No overdue assignments

### Full Site

Welcome to our newest release of Aspen Express. The full desktop is still available at the following link! [View](#)

Aspen  
https://www.myeducation.gov.bc.ca

## Academics List

Search on Description

Year  
Current Year

Term  
Current Term

Description	Teacher
<a href="#">ADST - Woodwork</a>	Surette, Tom
<a href="#">ASSIGNED TIME 10 ...</a>	Duifhuis, Nadine
<a href="#">ENGLISH LANGUAG...</a>	Agopsowicz, Emily
<a href="#">FOUNDATIONS OF ...</a>	Pyne, Timothy

Aspen  
https://www.myeducation.gov.bc.ca

<< Academics

## ENGLISH LANGUAGE ARTS 9

Agopsowicz, Emily

### Average Summary

No records

### Attendance Summary

Type	Term	Year
Absent	0	0
Tardy	0	0
Dismissed	0	0



Aspen  
https://www.myeducation.gov.bc.ca

Welcome, [REDACTED]

**Today** 0  
MONDAY, JANUARY 29, 2018

No assignments scheduled.

**Tomorrow** 0  
TUESDAY, JANUARY 30, 2018

No assignments scheduled.

**Overdue** 0

No assignments scheduled.

Calendar view for January 2018.

« December	January 2018						February »
31	1	2	3	4	5	6	
7	8	9	10	11	12	13	
14	15	16	17	18	19	20	
21	22	23 Fina...	24	25	26 VN#...	27	
28	29	30	31	1	2	3	



# THANK YOU!

You will find the MyEd BC login on your school's home page and the SD 68 Schools page

For more information or for support:

[School-FamilyPortalQuestions@sd68.bc.ca](mailto:School-FamilyPortalQuestions@sd68.bc.ca)



NANAIMO LADYSMITH  
PUBLIC SCHOOLS