
 KONICA MINOLTA	<h1>Printing on Cardstock — from PC's</h1>
<b>Make &amp; Models:</b>	Konica Minolta bizhub: all A3/11x17 models. Does not apply to desktop Letter/A4 models.
 <b>What's It Do?</b>	When printing on heavy weight paper or cardstock, you must tell the device the correct weight to ensure proper print quality and to prevent jamming.

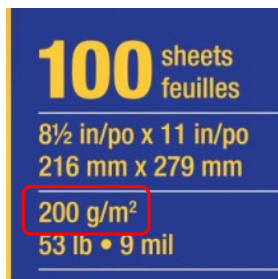
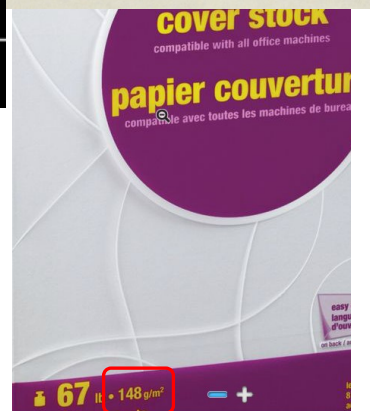
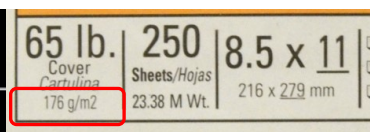
If you're making more than one trip to the copier, you're doing it wrong!

The most common error people make is to pre-load the Bypass Tray with the paper they want, yell out "NOBODY PRINT!!", go back to their computers and select the Bypass Tray from the printer driver, without selecting the proper Paper Type at any step along the way. Use the steps below to properly set up and print the job so you require only one trip to the copier and not have any wasted paper.

- ◆ The 1st step of printing on any cardstock is determining what Thick setting to use. To determine the correct one, you need to look for the **GSM or g/m<sup>2</sup>** weight on the package. (See pictures to the right). **\*Note:** Do not use the lb. weight.

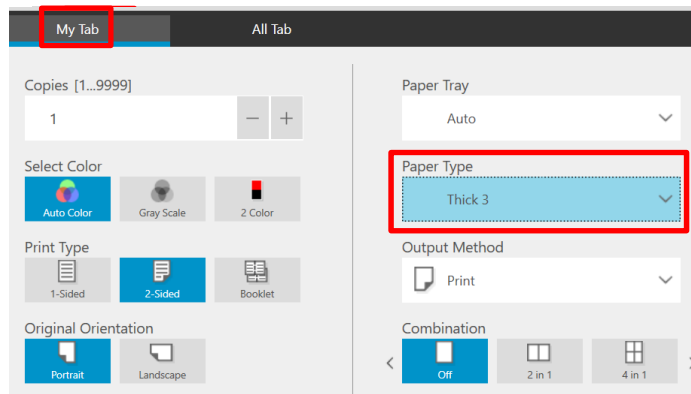
Use the chart on the reverse of this cheat sheet to determine which Thick setting you need.


- ◆ **INKJET Paper:** Make sure your paper is made for Laser Printers and/or Copiers. InkJet paper is coated to absorb cold, liquid ink and will not allow toner to fuse to it.



When ready to Print:

- 1) Click File, Print (or Ctrl P) to open the print dialogue box. Click Properties/Printer Properties/Printing Preferences to open the printer driver.
- 2) On **My Tab**: Select the **Paper Type**. **Leave the Paper Tray set to AUTO!** (Device will prompt for the paper tray.)
- 3) Select any other settings you wish, click OK and send to print.
- 4) At the device, WHEN PROMPTED, load the cardstock in the Bypass Tray. **\*Note:** Load print side down if the stock is gloss coated on one side.

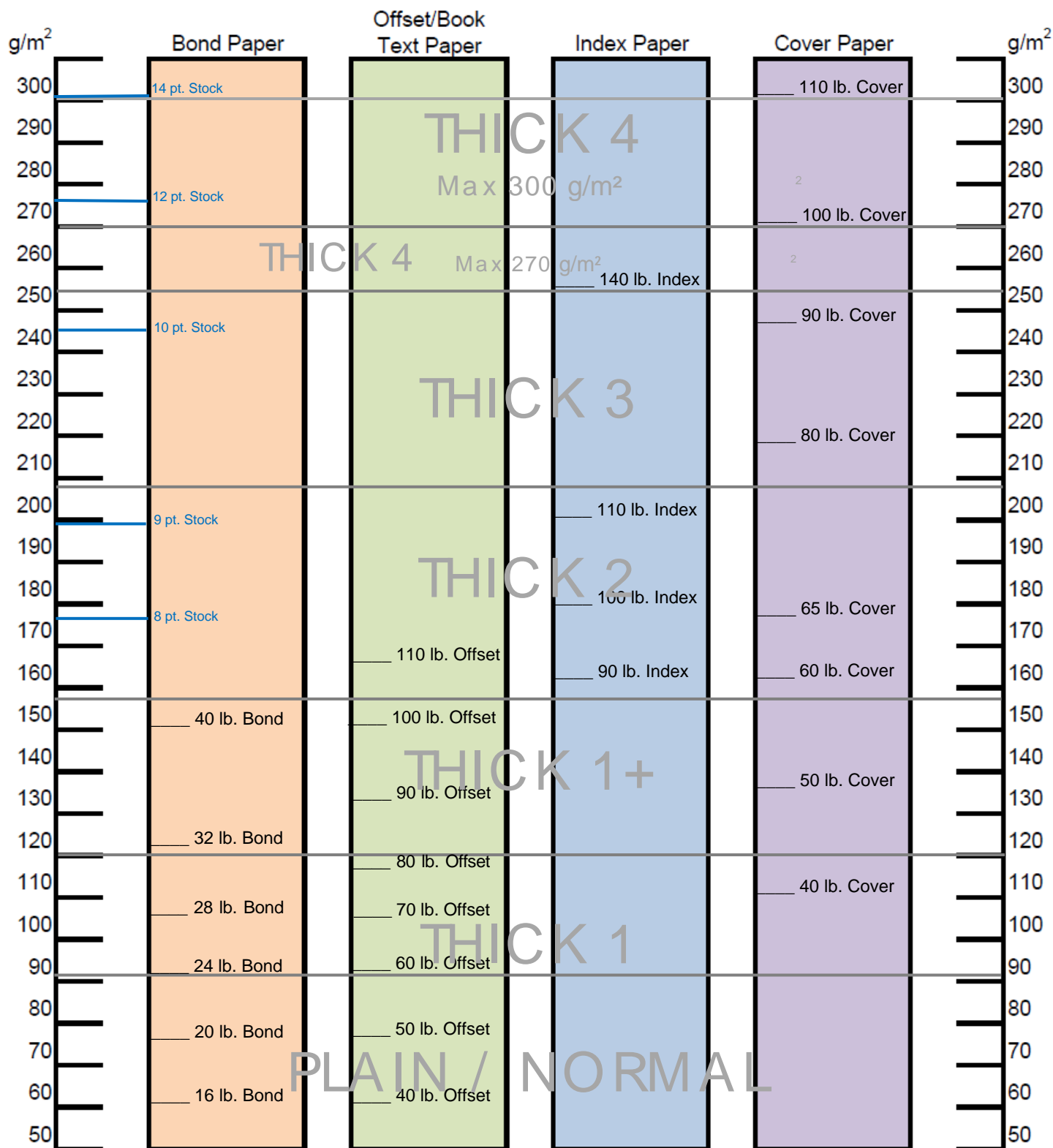


	<h2>Tips &amp; Tricks</h2> <p>When printing anything, the device will look for 2 things: the SIZE, and the TYPE of paper you have asked for. If either one of those two things don't match what is already loaded in the main tray (usually set to standard sizes, Plain paper type), then the device will automatically wait for you to load the paper in the Bypass Tray. This is why you don't need to pre-load your paper. This also minimizes the number of steps to print the job and reduces the chance for errors.</p>
--	--



KONICA MINOLTA

# Paper Weight Equivalency Chart



Konica Minolta Model Series	Max GSM	Konica Minolta Model Series	Max GSM
INFO-Palette Series (model numbers end in 4, 4e, 8, 9, i)	300	Bizhub 7 Series (model numbers end in 7), and all small, desktop models.	210