

DATE: August 11, 2023
TO: Brian Hackwood, School District No. 68
CC: Barbara Thomas, Sadie Robinson (City of Nanaimo)
FROM: Beth Hurford, Alannah Rodgers
FILE: 4649.0003.02
SUBJECT: Randerson Ridge Elementary – Drive to Five+ Review

1.0 BACKGROUND

Following Phase 1 of the Randerson Ridge School Travel Plan Review, Urban Systems was requested by School District 68 to review the existing Drive to Five+ locations and prepare recommendations for locations in closer proximity to the school or with improved potential for use by the school community. Where possible this work was guided by the City of Nanaimo’s [Drive to Five Toolkit](#). The toolkit describes Drive to 5+ as

“a program where parents drop-off and pick-up their children at locations that are a five-fifteen minute walk from the school. There are various ways to structure this program, depending on the age of the students and the capacities of the school Parent Advisory Council (PAC).”

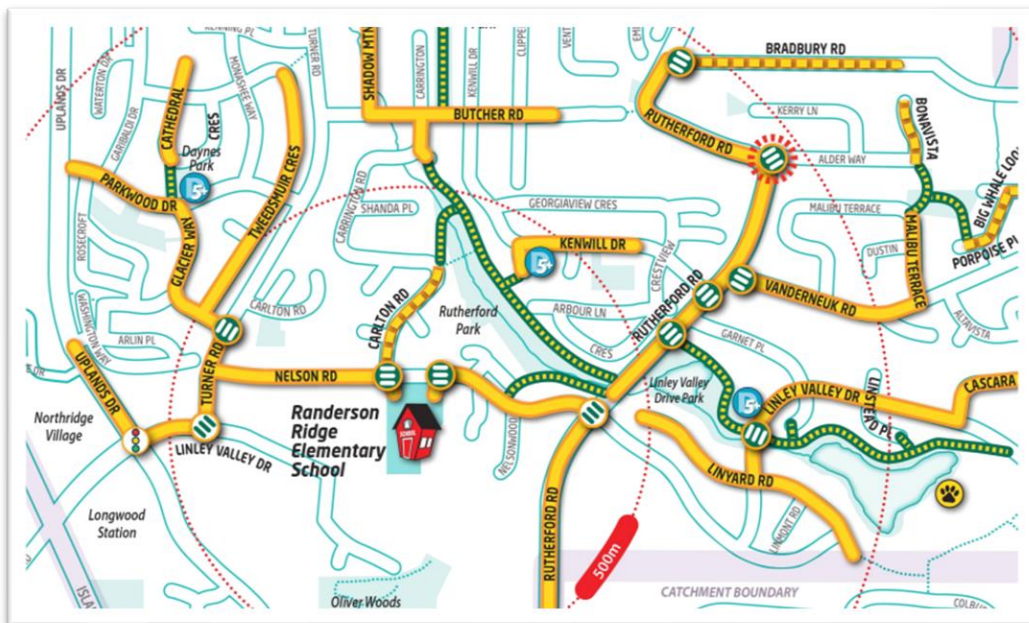


Figure 1: Excerpt from Randerson Ridge Best Routes Map

2.0 FINDINGS & RECOMMENDATIONS

Existing Drive to Five+ locations (shown in **Figure 1**, above) were reviewed in addition to exploring the potential for new locations. Urban Systems Ltd. conducted the review and requested and received input from the City of Nanaimo transportation team.. Criteria for new locations included walking proximity to Randerson Ridge Elementary, access to safe infrastructure to support pedestrians (including sidewalks, crosswalks and signalized intersections) and roadway capacity for short-term parking for drop off purposes (ie. available space) at the proposed locations. In addition, consideration of where drop off traffic would likely travel with the goal of Drive to Five+ drop-off and pick-up traffic avoiding the school area (Nelson Road frontage). These factors were evaluated while taking existing locations and challenges identified through previous discussions with the PAC into account.

The City of Nanaimo's Drive to Five+ Toolkit also identifies the following considerations:

- Ample room for parking
- Convenient for parents (are in the direction of where students live)
- Not inconveniencing anyone else (neighbors or businesses)
- Safe (low volume and well lit)

Options for new Drive to 5+ locations and considerations for next steps are provided below.

3.0 DRIVE TO FIVE+ SITE OPTIONS

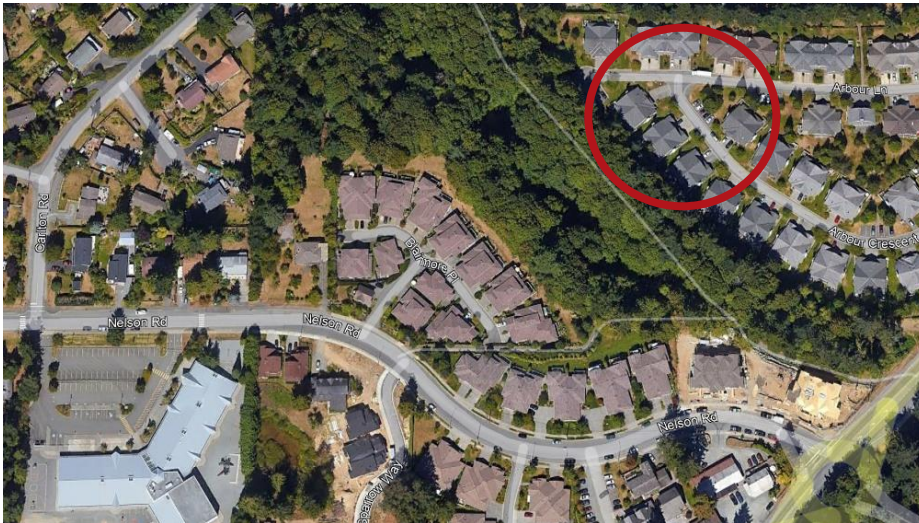
OPTION 1



Site 1 Considerations: Linley Valley Drive Near Turner Road

- Connects to new sidewalk on Nelson Road (installed Spring, 2023)
- Risk of construction activity ongoing in adjacent parcel (heavy duty vehicle access, temporary through construction period, Con)
- Does not require vehicle traffic to travel along school frontage
- Approximately 520m from school (approximately 12 minutes for children)
- Requires vehicle turnaround on Linley Valley or Stillwater Way

OPTION 2

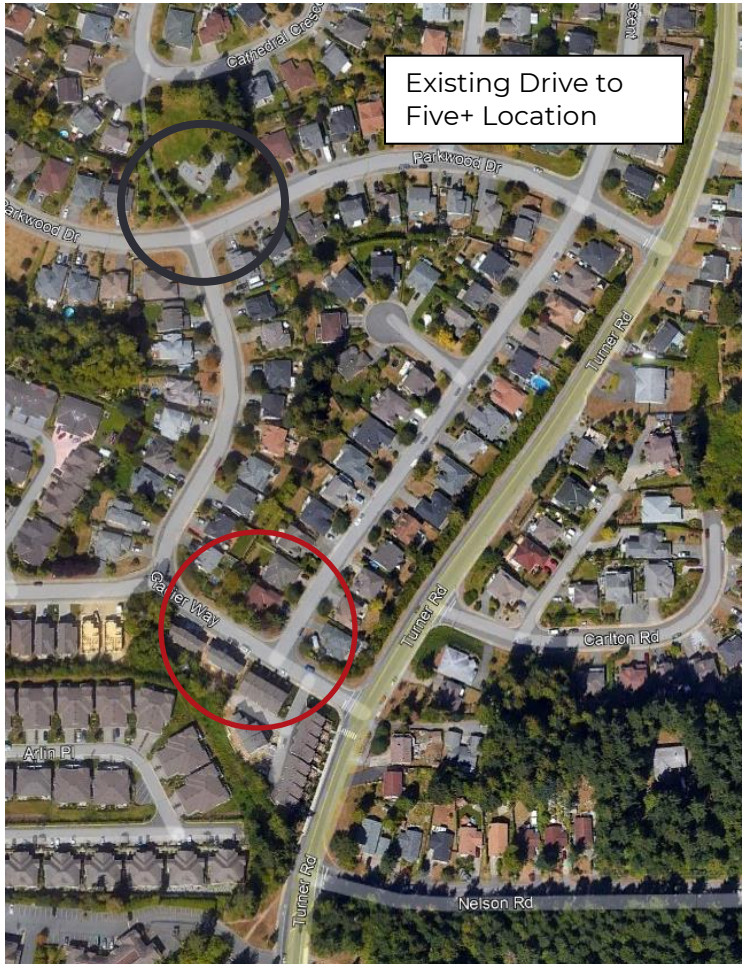


Site 2 Characteristics: Arbour Lane at Rutherford Park

- Connects to walking path that runs parallel to Nelson Road
- Low volume street with large driveways indicates little constraints for parking
- Approximately 530 m from school (10+ minute walk)
- Provide school route signage (10 Minutes Walk, 5 Minutes Walk, 3 Minutes Walk) to encourage students walking from the location and as guidance

- Off-street nature of pathway access may present safety concerns for caregivers due to fewer “eyes on the street”
- Arbour Crescent provides turnaround loop for safer turning
- Drop off traffic will not divert onto Nelson Road.

OPTION 3



Site 3: Daynes Park

This Drive to Five+ location was identified by parents as a location and route that is currently used for students and caregivers to walk as a group.

City of Nanaimo review recommended moving location to Glacier Way at Tweedsmuir Crescent (200m away) due to shorter distance to school, flatter terrain, and availability of on -street parking.

Recommendation for Option 3: Move Drive to Five+ Location to Glacier Way at Tweedsmuir Crescent

OPTION 4



Site 4: Commercial plaza at Rutherford and Nelson

- Use of commercial parking lot, approximately 200m from Randerson Ridge Elementary
- Would require agreement with businesses in the plaza to use the parking lot for short-term pick-up and encourage students to walk along Nelson Rd to school (300m)

Recommendations for Option 4:

- Conduct engagement with businesses, and discuss the following parameters:
- To be used solely as morning drop off location. Provide signage for afternoon pickup to be at Linley Valley Drive location
- Conduct engagement with stakeholders of the plaza to gain a better sense of individuals using the site as a morning drop-off location
- Make agreement with businesses in the plaza to use the parking lot for short-term drop-off.

4.0 NEXT STEPS

The School District and city may wish to work together to confirm the locations identified within this memorandum as Drive to Five+ locations for Randerson Ridge Elementary School. As previously mentioned, the City has developed a toolkit to guide Drive to Five+ programs and outlines a spectrum of approaches. The desired approach for Randerson Ridge may differ depending on the audience. However, the recommendations for next steps are based on our understanding of the school community's desires which best align with the City's 'Option 2' – Mapping and Signs and therefore the next steps outlined reflect this approach. It is also important to note that the City of Nanaimo has provided input on these locations to date, but further engagement may be required to ensure signage is in place, and to report on any impacts (ie. neighbourhood complaints, parking concerns, any safety concerns that may arise).

Step 1: Map out five-minute walk locations from the school

Status: Complete. Four location options have been identified within reasonable walking distance to the school.

Next Step: Review the four options with the PAC and school administrator to confirm comfort and buy-in for these locations. Upon approval, update the Best Routes map and circulate with all future promotion and messaging.

Note that Option 4 may need further engagement with businesses however some signs may currently be found at this location and require updating and further promotion if Option 4 is pursued.

Step 2: Put up Drive to Five+ signs once locations have been confirmed

Status: To be initiated. Note that a Sign Template is to be provided as part of this project as the City has committed to having a metal sign installed to designate the locations should they be utilized by the school community.

Next Step: Either the night before or the morning of days that are being promoted as Drive to Five+ days, put up Drive to Five+ signs at the mapped-out Drive to Five+ locations. If the school prefers to promote these locations for every day use a temporary sign should be mounted at each location to raise awareness. Every day use is recommended to help mitigate congestion at the school frontage and within the parking area. Note that wayfinding signage may help build confidence in students and could be considered (ie. Five minutes walking distance with directional arrow, 2 minutes walking distance, 30 seconds walking distance).

Optional: Discuss interest from PAC and previous School Safety group to add "greeters". This option may be appropriate if the school is able to commit parent time as it would be required to add greeters at each mapped location (once confirmed).

Ongoing: Adapt with input from school community throughout the 2023/2024 school year.

Step 3: Promote the locations and their use

Status: To be initiated. Promoting the locations to be used is a critical step. This may be done through various ways such as widely circulating the Best Routes to School Map with messaging specific to the alternative drop off locations, hand outs for caregivers parked or idling on the school premises before and after bells are scheduled, within newsletters, through PAC communications, etc. Guidance for most effective outreach should be informed by the school principal and input from the PAC group. An excerpt from the City of Nanaimo's [Drive to Five Toolkit](#) has been provided alongside this memorandum.

URBAN SYSTEMS MEMORANDUM

DATE: August 11, 2023

FILE: 4649.0003.02

PAGE: 8 of 8

SUBJECT: Randerson Ridge Elementary – Drive to Five+ Review

Next Steps: Presenting the proposed locations to the PAC is the first step to implementing these locations. Developing the communications materials will be critical but only upon finalizing the locations.

Additional considerations for improving the connections to the school from these proposed locations include promoting and providing signage to pedestrian trail connecting Linley Valley Drive to Nelson Road once the Nelson Road development has been established, provide signage for vehicle commuters to follow for safer turnaround opportunities where possible and therefore avoid additional traffic along Nelson Road

Beth Hurford
Transportation Planner

cc: Alannah Rodgers, Urban Systems

/bh
Enclosure

[Document2](#)

DRAFT